




AVIVA FAMILY AND
CHILDREN'S SERVICES 2021
SOCIAL IMPACT &
FINANCIAL REPORT



CREATING BRIGHTER FUTURES

STORIES OF HOPE AND RESILIENCE

AVIVA.ORG

Founded in 1915 as Hamburger Home, Inc.
Aviva Family and Children's Services

7120 Franklin Avenue, Los Angeles CA 90046 | 323.876.0550



TO OUR SUPPORTERS, DONORS, AND FRIENDS...

Thank you for your continued support of our mission.

This year, the challenges of COVID-19 continued to be unusually difficult for the most vulnerable families in Los Angeles. At Aviva, we focused on hope and resilience, the driving forces of the transformational work we do.

Our amazing employees, children and families were able to collaborate, share ideas and blend evidence-based therapies to best serve each family's needs. Our humility and respect are the keys to the positive outcomes for our clients especially in these difficult times.

With continued commitment to our program areas of Mental Health, Crisis Intervention, Foster and Adoption, and Supportive Housing for Women and Children, we were encouraged to see families overcome struggles and trauma, identifying new pathways leading to hope, resilience and transformation. Every step of the way our extraordinary team of caregivers, case managers and support staff responded to changing dynamics in how we provide support — offering compassionate care whether in person or virtually. Their tireless commitment to our work inspired our leadership team, Board of Directors and clients.

Critically needed generosity from our donors, partners and friends ensured that every family who needed our support was able to receive it. At Wallis House we worked to lift women and children out of homelessness and onto the path to brighter futures. We began healing wounds of trauma, neglect and addiction in children. We were encouraged as foster children developed a sense of belonging and safety that allowed them to look more confidently towards the future knowing they have the skills to be resilient and successful.

Each day brought new opportunities to be present for our community. Every child and every family received the compassionate care that characterizes Aviva's work. As we reflect on the past year, we are grateful beyond words to those who have supported our mission. We look forward to continuing to transform lives and create brighter futures along with you.

Sincerely yours,



Regina Bette, L.M.F.T.
she/her/hers
President/CEO



Jonathan Werner, Esq.
he/him/his
AlvaradoSmith

HOW TO GET INVOLVED



PLANNED GIVING

Consider creating an enduring legacy for our community. Planned giving opportunities are an important way to provide ongoing support to Aviva Family and Children's Services. Let us help you find a charitable plan that lets you support your family, Aviva and the future of our community. To discuss planned giving opportunities, please contact: Adam M. Greenwald, MBA, Vice President of Development, at 323-876-0550 or at agreenwald@aviva.org.



VOLUNTEERING

Aviva offers a variety of volunteer opportunities on both a short-term and long-term basis. Every volunteer brings a unique set of skills and experiences that can make a positive and lasting impact on our clients. Specific volunteer programs include:

- Annual Holiday Drive to help families
- End-of-Summer Giveaway to donate school supplies

To learn more about volunteer opportunities, please email volunteer@aviva.org or contact Azucena Navarrete at 323.876.0550 ext. 1122.



COMMUNITY SUPPORT

Special thanks to our most generous and loyal supporters for their cash gifts, gifts in-kind and their time. To learn more about our needs and how you can make a difference at Aviva, please contact our Development Department at development@aviva.org, visit www.aviva.org/donate or at 323-876-0550.



PLATINUM ASSOCIATES

Aviva's Platinum Associates are dedicated to making a difference in the lives of at-risk youth. Since its inception in 2001, the Platinum Associates have raised more than \$1 million in support of Aviva's work.

Membership in the Platinum Associates offered to those making a \$1,000 annual gift. With a commitment to Aviva's Platinum Associates, members receive meaningful benefits including networking opportunities, exclusive luncheons, lectures, and social events, as well as unique volunteer opportunities with Aviva clients. More at www.aviva.org/platinum

CREATING A BETTER, STRONGER AND MORE INCLUSIVE CULTURE

Aviva continually commits to our Justice, Equity, Diversity and Inclusion (JEDI) initiative and has included JEDI as one of our four areas of focus on our 2021-2025 Strategic Plan.

We have established an intra-agency committee comprised of a cross section of employees working together to make Aviva a standout agency in inclusion and equity and to create awareness around social justice. The committee meets twice a month. This year the committee held an agency-wide townhall to give employees a forum to initiate conversations about supporting a brave space and inclusive culture. The committee also made a recommendation, approved by the Board, to establish Juneteenth as an agency holiday. We will continue to uphold the highest standards of equity and diversity in our work.



HIGHLIGHTS OF 2021

PAGE 04

FEATURE STORY

Outgoing Chief Executive Regina Bette reflects on her tenure at Aviva

PAGE 10

MOBILIZING IN MEANINGFUL WAYS

How Board Member Mark Caffee put his social network to work

PAGE 11

STORIES OF RESILIENCE

Read the stories of transformation and resilience from across our programs in this special section

PAGE 18

UPDATES FROM WALLIS HOUSE

Wallis House continues to transform lives and support vulnerable women and children finding their path home

PAGE 26

OUR AVIVA CELEBRATION IS ON!

Learn more about the May event from Event Chair and Board Member Leslie Kavanaugh

AVIVA FAMILY AND CHILDREN'S SERVICES MISSION

We believe that every child and every family in our Los Angeles community deserves the chance for a brighter future. We provide compassionate support, therapeutic services, and guidance to at-risk children and families.



REFLECTIONS ON AVIVA FAMILY AND CHILDREN'S SERVICES WITH REGINA BETTE

In July 2022, Regina Bette will retire as Chief Executive Officer of Aviva Family and Children's Services. For nearly eleven years, she has guided the organization with a spirit of generosity, conviction about the power of hope, and a vision for providing children and families the opportunity to achieve brighter futures. We spoke with her as she reflected on her tenure and thought about the road ahead.



What were your first impressions of Aviva Family and Children's Services?

Regina Bette: I had known about Aviva because of the adolescent conferences they hosted, and I knew they had a residential program for teenage girls. Teenage girls are challenging, but they are also one of my favorite populations to work with. As I got to know the organization, I was impressed by the fact that the Aviva board was majority women and I was excited to work with like-minded women. It was clear from the beginning that all our board members were incredibly connected to the organizational mission and having so many women leaders was new and exciting to me. It's not that the men on the board aren't critically important — because they are — but the women seemed so focused on the services we provided. Over time that meant that when we needed to raise funds to offer the kind of programs we felt most strongly about they were ready, willing and able.

THE AVIVA FAMILY RESOURCE CENTER

In the past year, widespread need in Aviva's client communities grew. The impact of the pandemic was wide and deep at a time that could already be described as dire in many Los Angeles communities. The majority of families whose children receive direct services in each of Aviva's four signature program areas are food insecure — their needs far surpass their means. The public health crisis is exacerbating already tenuous economic conditions and has resulted in limited access to food and basic necessities for our clients. We mobilized our Aviva community and responded with the following, free of charge to our families and clients:

FOOD PANTRY

Our pantry is available to all families we serve and is abundant with needed nourishment including non-perishable foods, fresh fruits and vegetables, baby formula, water, cereal, legumes, rice, and grocery gift cards.

RESOURCE CLOSET

Offering clothing and shoes; diapers and baby items; personal care and hygiene products; household and cleaning supplies; backpacks, school supplies, books and educational materials; arts and crafts supplies; toys; household furniture, appliances and kitchen goods.

ENRICHMENT PROGRAMS

Our enrichment programs include personal development for adults that encompass workshops and education, vocational development and financial literacy as well as coaching, wellness, and nutrition. We also offer educational support and expressive arts classes for children.





WHEN FAMILIES COME TOGETHER TO HELP FAMILIES...

we are able to reach more families and support them with more services and resources. Our Family Resource Center is a community-supported place for families to get the food, basic necessities, and programs they need.

FOOD
PANTRY

RESOURCE
CLOSET

ENRICHMENT
PROGRAMS

How have programs and services evolved over time and over your tenure?

Regina Bette: During my time working in social services, I've seen a shift in how we perceive our work. In the past, we focused on our expertise to direct our clients' care and we focused on our expertise to direct our clients' care and objectives. In the time I've been at Aviva we have shifted emphasis to our clients' defined motivations and aspirations. We've transitioned our approach with a less authoritarian tone and a more supportive one, "We're going to walk beside you and help you with what you want to achieve."

Another significant shift has been an increasing focus on family. Today, we look for ways to avoid taking kids away from their family. We work with the whole family to protect children and to build up family skills. This is particularly true in our work with parents. We want to help them become healthier parents. At Aviva, we had the group home (now Wallis House) for a long time, but it was a program that took kids away from their family and put them into intensive

treatment. Then we would struggle to reunite them. Now, we've made a very intentional shift to looking at how we can support families to keep them together.

How has Wallis House been transformed into Supportive Housing for Women and Children?

I remember the first time visiting Wallis House and thinking I am going to be spending the rest of my career raising money to improve this place. It's a 1917 home and it's huge. It's going to need constant upgrades. And then Councilmember David Ryu helped us get funding for a major renovation of the building. With his support, we were able to transform the residence — floors, energy-efficient windows, ADA compliance, and more. It became a beautiful place to welcome women and children.

The very first woman that came into the house thought she was coming to a shelter. The thought of a shelter may have led her to expect a make-shift environment. She was clearly pleasantly surprised. After a tour, and she turned to the staff and said, "This isn't a shelter; this is a home."

That's so important to me and to my team because the environment we bring our clients into says a lot about how we value them. Having a well-kept, beautiful residence communicates that value to everyone. It also honors Aviva's long tradition of protecting women and children.

“
We're going to walk
beside you and help you
with what you want to achieve.
”



REFLECTIONS ON AVIVA FAMILY AND CHILDREN'S SERVICES WITH REGINA BETTE (CONTINUED)

The expanding definition of family is an important part of Aviva's work and is an essential part of your programs. What other services support families?

Regina Bette: We have a few programs that look at the extended family to see if there's anybody who can provide for the child with a little help getting their home ready or with some parenting skills. This option makes it easier for the child who must be removed from the home to stay connected to all their extended family members, and participate in family reunions, traditions, birthday parties.

The most interesting and rewarding part of our work is getting into the individual strengths and challenges of each family. Families are unique, they come with various strengths and weaknesses, and they need diverse kinds of supports from us. Our staff are caring, informed, insightful and well-trained. And again, we focus on our clients being the experts with their own goals while we are underneath lifting them up, as opposed to having all the answers.

From day one at Aviva, one of the things I noticed is that our employees really, really care about children and families. They put the time and effort into getting to know them and advocating on their behalf. I have never worried that our services aren't good enough. We've always provided excellent services. When you hear our team's stories about their work, you can see how proud they are of what they're able to accomplish. What the staff looks for from our administrative team is the space to offer excellent supports to children and families. Regardless of what

their role is, service to our families is essential. Our operations staff, for example, understand that when they're taking care of the facility, they are helping the children and families. Their work may not have a direct line to the child or the family, but they recognize they help provide an environment that allows Aviva services to be done well.

Aviva has an incredibly diverse workforce. We know that we have areas of deficit, particularly in having enough men working for the organization. And we know that is important because we work with about 50 percent boys and 50 percent girls overall. We want to have role models for all our kids. That said, our staff are not only good, they are fun. They all get dressed up in costumes for Halloween and they get into the team spirit as well as the work. That kind of environment makes it easy to come to work every day. We all have a strong bond so that when tough times come, we can all come together and support each other. We value different perspectives. Diversity of talents and interests amongst our staff allows us to cover more ground.

As you reflect on your leadership and your team at Aviva, what will you miss most?

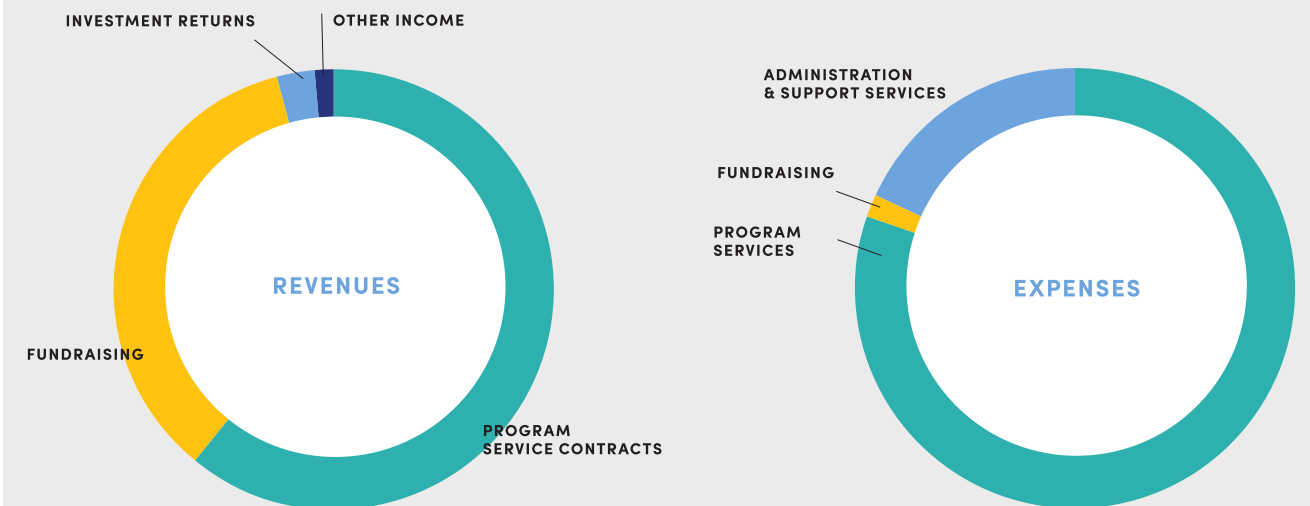
Regina Bette: I'm going to miss the people — my staff, the board of directors, my colleagues — those relationships have become so important. I still think that I take it a little bit for granted that they're there. Maybe the pandemic has helped a little bit in separating us so that it will be a little easier for me when I go. But really, I'm going to miss all the stories about what my team did on the weekend or how

“ This isn't a shelter; this is a home. ”

- The first resident of Wallis House

FINANCIAL UPDATE

FISCAL YEAR 2020-2021



REVENUES	FY 20-21
Program services contracts	15,103,306
Fundraising*	3,046,422
Investment returns	1,586,014
Other income	147,946
Total revenues	\$19,883,688

* Contributions, grants, in-kind gifts, PPP grant revenue and special events
 ** excludes depreciation
 Note: For a complete set of audited financial statements,

REVENUE & SUPPORT DETAIL

Foster and Adoption services	4,542,317
Mental Health services	3,877,249
Crisis Intervention services	6,230,539
Interim supportive housing services	453,200
Fundraising-grants and contributions	2,947,169
Fundraising special events	99,253
Net investment returns	1,586,014
Other income	147,946
Total revenue and support	\$19,883,688

EXPENSES	FY 20-21
Program services	12,936,298*
Fundraising	263,450
Administrative and support services	2,884,742
Total expenses	\$16,084,490

* More than 80% of all money raised goes directly to Aviva Programs and Services.

OPERATING EXPENSES DETAIL

Foster and Adoption services	3,863,205
Mental Health services	3,669,650
Crisis Intervention services	4,576,488
Interim supportive housing services	826,955
Fundraising	263,450
Administrative and support service	2,884,742
Total revenue and support	\$16,084,490

THE AVIVA SPRING CELEBRATION IS RENEWED IN THE HILLS OF MALIBU.

Event Chairperson and esteemed member of the Aviva board Leslie Kavanaugh lights up when she talks about the Aviva Spring Celebration — The Art of Giving.

Rather than a traditional ballroom event, Aviva is thrilled to invite guests to an exquisite outdoor setting that will be a breath of fresh air, a scenic setting for community and friendship, and a reflection of the many ways Aviva Family and Children's Services are transforming and renewing the lives of Los Angeles families and children.

Featuring the culinary stylings of the beloved Nancy Silverton and hosted by the incomparable Billy Harris, the event will encompass the many ways our lives intersect with art. Kavanaugh shares, "There will be many experiences — the art of mixology, the art of cuisine, the art of creative expression and many more surprises. Of course, as an important opportunity to raise money for Aviva programs, the Art of Giving is the focal point of the evening."

“ Aviva means renew and we're so excited to renew our vision for the spring event by creating a celebration of art.

- Leslie Kavanaugh ”

**SADDLEROCK RANCH IN MALIBU
MAY 7, 2022 | 4:30 P.M.**

For details visit: www.aviva.org/artofgiving

they solved a particular problem. There have been extraordinary solutions to family challenges. I love the creativity. I love hearing the stories. I am going to miss being together.

optimistic and positive. I think one of the most important things that we do for the families and kids is we help them to be more hopeful that things will get better. Things can change.

And, I feel incredibly hopeful. The team approaches everything with the attitude, "We can help." Aviva is

“ We've made a very intentional shift to looking at how we can support families to keep them together.

”



MEANINGFUL SOCIAL IMPACT

IN THE PAST YEAR, WE HAVE PROVIDED OVER **88,627 HOURS** OF SERVICE TO CHILDREN AND FAMILIES IN OUR LOCAL COMMUNITY.

Our families continued to experience unprecedented challenges in mental health, financial and medical crises, and poverty-related adversities.

With the support of Aviva's team of case managers, social workers and care providers, we were able to help families in the following ways:



FOSTER & ADOPTION

... placed 73% of foster youth in permanent stable homes



MENTAL HEALTH SERVICES

... clients saw a 60% decrease in risky behavior as a result of treatment

(measured by the PSC-35)



COMPASSIONATE CARE

Our clients experienced a significant decrease in needs and an increase in strengths as a result of treatment

(evidenced by data from our Child and Adolescent Needs and Strengths tool)



CRISIS INTERVENTION

82% of wraparound families felt their Aviva team gave them the tools and confidence to manage future problems and the community supports to meet their needs



WALLIS HOUSE

... housed 54 women and 74 children

Julie Kennedy
Betty Kharrazi
Elyse Koenig
Nicole Kosoff
Code Read
LA Works
Marilyn Landao
Legacy Wealth Partner
Legendary Entertainment
Adam Lerner
Carolyn and Kit Lokey
Ilia Lopez
Lucille's Smokehouse Bar-B-Que
Addie Manis
Jode Mann
Heidi Jo Markel
Mari Marks
Shannon McIntosh
Gretchen Meier
Merril Lynch
Donna Messinger
Danette Meyers
Angela Miller
MiLOWE
Tilden Moschetti
Nick Munoz
Usha Murthy
Na'amat USA
Azucena Navarrete
Jodie Neve
Newborns In Need
NGA Hancock Park
Noah's Bagels
Christine Nguyen
Olive Garden
Ontic BBA Aviation
Onzie Activewear
Alyssa Ortega
Ruth & Gary Ott
Rosa Palma
Johannah K Patron
Nadia Perez
Kim Peterson
Gina Posher
Ruth Pressman

Susan Proffitt Wattles
Ana Laura Ramirez
Suzette Ramos Galvez
Rhonda Rand
Dana Reston-Lyons and Robert Lyons
Jason Ropell
Christine Rosania
Ross Stores, Inc.
Elisa Rubin and Something Treasure
Angie Rubin
Melanie Rud
Kristin Sabo
Safe Passages
Desiree Samuels
Santasia
Greer and Myles Saunders
Erica Schaecher
Elaine Schreiber
Devra Schwartz
Selfish Box
Julian Seney
Erez Setty
Seyfarth
Kelly Shanley
Shelter Partnership
Robin Shephard
Robert Singer
Social Serva Toy Drive
Gurdwara Singh Sabha
Candace Foy Smith
Erika Stalder
Brandy and Adam Starks
Allen Steiner
Allisen Steward
Jamie Stone and Nicole Chavez
Stuntmen's Association of Motion Pictures
Phachara Sujirapanya
Sunset Gower Studios
Jessica Surfes
Robin Swartz
Marilyn Szatmary
Robin Taub Desowitz
Temple City High School D.R.I.V.E

Temple Israel of Hollywood
TGI Friday's
The Book Foundation
This Is Us Production Team
Myra Thompson
Paula Tieger
Cynthia Tirado
Tina Tran
Troop 416
Linda Tyrer
Denisse Vallejo
Stacy Varner
Viking Charities
Jean Villepique
Bonnie Nicole Waldman
Madeline Walter
Kevin Weeding
Susan Welde
Linda Wells
Jonathan M. Werner
WildFlora
Jessica Williamson
Penny Wise
Douglas Wolf
Beverly Woss
Nicole Zien

SPECIAL THANKS TO:

Paramount Studios for participating in our first annual AvivaWalks! walk-a-thon in June 2021.

Aviva successfully raised nearly **\$70,000.**



Michael Morrison
 Jardeca INC
 Karin Mueller
 Jenny Murphy
 Paige Oliver
 Erica Olsen
 Julie Omsberg
 Teresa ORourke Shapiro
 Alyssa Ortega
 Kathryn Pallakoff
 Teri Parcon
 Paypal Giving Fund
 Andrew Pearson
 Neil Pennock
 Premier Healthcare Alliance, LP
 Deborah Priebe
 Rosaura Ramirez
 Keith Ramsey
 Sam Randazzo
 Belinda Reser
 Elizabeth Rolando
 Jacqueline Romero
 Luis Rubalcava
 Vanessa Ruiz
 Debra Sakata
 Deborah Sank
 Louise Sattler
 Erica Schaecher
 Susan Schilling
 Abigail Schoenberg
 Siri Scott
 Edythe Seaver
 Michael Seligman
 Michael Shelton
 Emily Silvers
 Sharon Simon
 Michael Simon
 Candace Sims
 Barbara Smith
 Reva Sober
 Matthew Spencer
 Juliette Spinner
 Kelly Spirer
 Brandon Stock
 Meredith Stuntz

Ted Sun
 Pauline Tan
 Susan Thalken
 Meagan Timms
 Cynthia Tirado
 Naomi Tratar
 Sharon Tripp
 Esperanza Valera
 Andre Van Gerwen
 Cheryl Van Tassel
 Nicole Vega
 Nayeli Velazquez
 Maria Vergara
 Francyne M Vezina
 Patricia Villadonga
 Isabel Villalta
 Katrina Walker
 Christie Webb
 Lauren Weintraubb
 Christine West
 Carol Wexler
 Joan Wickman
 Patricia Wilkie
 Sierra Wilson
 Angelyn Wood
 Kelsi Yeakel
 Tarik Yetken
 Soojin Yoon
 Donna Zibresky

In-Kind

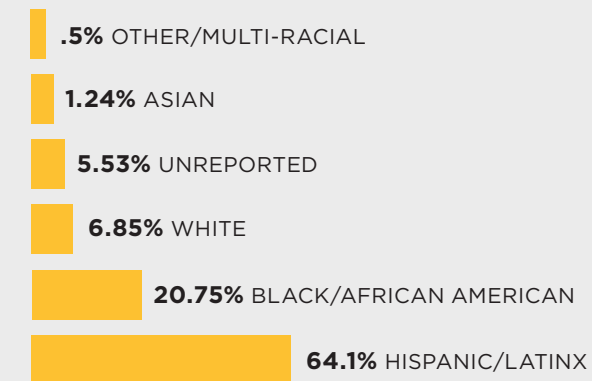
Aerospace Corporation
 Sandra Alvarez
 Teri Andony
 Angotti Designs
 Anonymous
 Venice Anonymous
 Sally Anwar Coro Community Management & Consulting
 Olga Araujo-Delgadillo
 Iris Arias
 Dr. Mike Asatryan
 Assistance League of Los Angeles
 Baby 2 Baby

Marsha Baker
 Jessica Barth and Danny Cusumano
 Jennifer Baum
 Beauty Bus
 Donna Becker
 John Berardi
 Debby Berg
 Mary Helen Berg
 Mark Bernsley
 Regina Bette
 Bibito
 Big Sunday
 Bianca Blanco
 Block Shop Textiles
 BOMA
 Bombas Socks
 KC Brandenstein
 Breaking Through Barriers to Success
 Jana Brennan
 Kristin Brenner
 Judy and Bernard Briskin
 Eliezer Brown
 Jamie Bullogh-Latsch
 Ben Cardona
 Nina Carnazza
 Wrenn and Bill Chais
 Chloe Chais
 Marisha Charbonet
 Alicia and Thomas Clapper
 Emily Clifford
 Liz Coopersmith
 Kate and Chris Corsmeier
 Sabrina Crame
 Create Now!
 Ana Cruz
 Jillian Daignault Daignault
 Ronald and Gigi Davis
 Mina Del Torro
 Rosa Delgadio
 Jeremy Diller
 Francisco Dupon Jr.
 Margaret Early
 Kristin Ebbert
 Maricela Echeverri

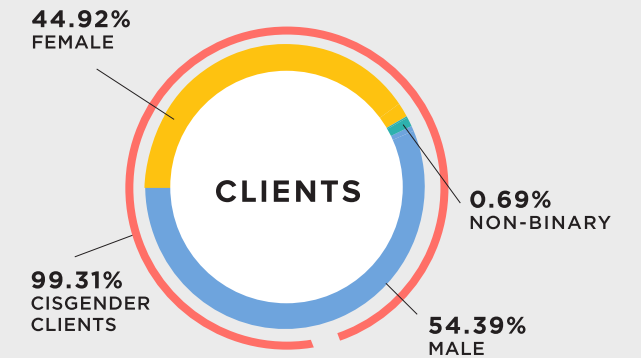
Exploding Kittens
 Caliber Home Loans
 Birdie Feldmen
 Michelle Fields
 Brent Finch
 Sheppard Mullin Richter & Hampton, LLP
 Food Finders
 For Goodness Cakes
 Free Arts
 Alvin Fu
 Gala, Inc.
 Ashley Galindo
 Angela Galleta
 Laura Geffen and John Groper
 Jennifer Gentin
 gish SEIDEN, LLP
 Giving Grace L.A.
 Shana Glassman
 Kate Gordon
 Margi Graham
 Adam M. Greenwald
 Drew Grey
 Irene Grigoryan
 Marlene Gursej
 Rebecca Hagedorn-Suffolk
 Julie Haire
 Ashley Hall
 Brooke and Ken Halsband
 Harvard-Westlake School
 Paul Hewitt
 Fiona and Phil Heyes
 Hot Coca Bomb Mom
 Sharon Hyatt
 Independent Living Center
 Ipsy
 Cameron Jackson
 Jeff Jamerson
 Nina Jewell
 Amanda Johnston
 Alex Jones
 Journey of Faith
 Junior League Los Angeles
 Kaiser Permanente Los Angeles Medical Center
 Monica Kandavel
 Dylan Kawahara

EVERY CHILD & EVERY FAMILY

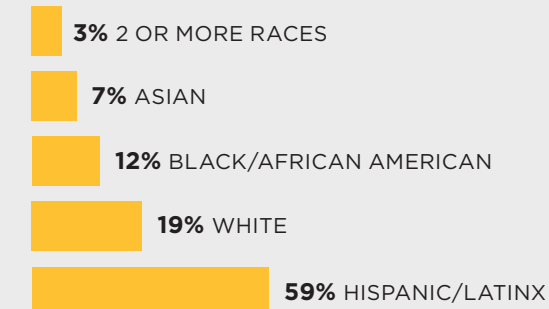
CLIENT RACIAL BREAKDOWN



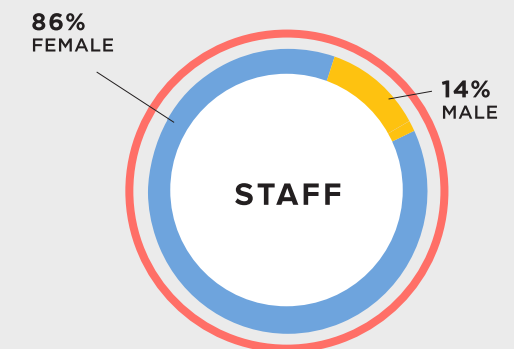
CLIENT GENDER BREAKDOWN



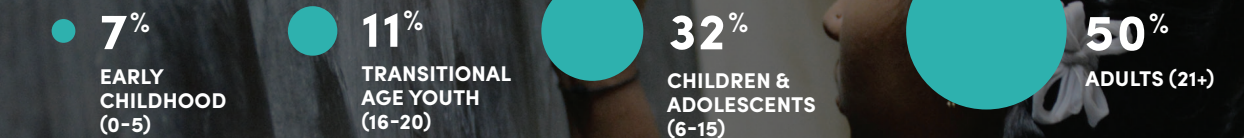
STAFF RACIAL BREAKDOWN



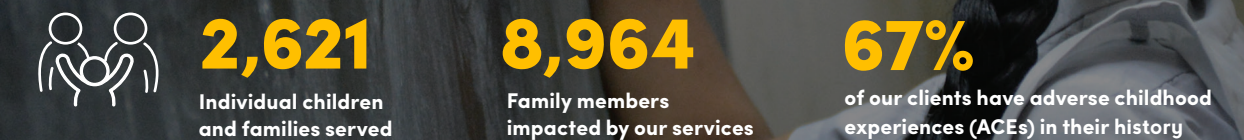
STAFF GENDER BREAKDOWN



CLIENT AGE BREAKDOWN



NUMBER OF FAMILIES SERVED



HOW MARK CAFFEE, CHACHO AND ARMANDO TURNED PASSION INTO POTENTIAL FOR AVIVAWALKS!

This year we were innovative in how we hosted fundraising events and we turned to our supporters to activate their own social networks to help the cause. Board member Mark Caffee, along with his canine companions Chacho and Armando, responded enthusiastically.

To raise money for AvivaWalks!, our virtual event in June 2021, Mark reached out to his personal network. He also tapped the canine-loving community by posting on his beloved dogs' Instagram account (@pauleydog), which has thousands of followers. Mark exceeded his fundraising goal of \$5,000 and with the help of his high-profile pets, he raised over \$8,500. In addition to generous event donors, Mark and his pooches inspired others to engage further through additional giving opportunities.

Mark's connection to Aviva is deeply personal since he was adopted shortly after his birth. He knows the gift of a cohesive family and secure home. He also knows that there are all too many children across Los Angeles whose family lives are not as stable, safe, and healthy as his was. He is passionate in advocating for those children and their families.



Paul Riley
Deanna Robinson
Richel Roggin
Jessica Rollins
Lee Bette Rosacci
Susan Rosales
James Rowe
Ms. Mariana Rubalcava
Pamela Rubin-Knudsen
Pamela Ryan
Jeffrey Salomon
Josh Saltman
Desiree Samuels
Kirsten Sarkisian
Matthew Saunders
Phyllis and Jay Schapira
Ian Schapiro
Lorel Scott
Dan Shaw
Nazila Shokrian
Jonathan Shomof
Laurie Sischo
Nathanael Smith
Esther Son
Karina Souquette
Victor Spaccarelli
Viviana Spaccarelli
Brandy and Adam Starks
Clara Steingold
David Stroud
Renee Sullivan
Mara Susskind-Kalcheim
James Szczepanek
Kristen Taekman
Avedis Tarakjian
Ms. Tricia Taylor
Diana Torres
Barbara Turner
Paula Van Norden
Jamie Vanderpool
Christopher Verdugo
Joni Villanueva
Ronnie Walker
Lori Walker
Nancy Wallan

Friends \$99

Nathaniel Alexander
Rebecca Allen
Ms. Pamela Allen
Julia Alvarado
Kelsey Applebee
Robyn Aronson
Taryn Aronson
Christian Baker
Robert Barker
David Beckwith
Susan Bernard
James Bette
Robin Blake and
Stephen Stewart
Thomas Blake
Lisa Bolden
Jana Bond
Daniel Brooks
Arnita Brown
Vida Brucker
Rebecca Buck
Aaron J Buckley
Mrs. Marie Burk
Brenda Burkett
Patty Burnette
Gail Cabala-Lowry
Hattie Caffee
Shelagh Callahan
Amy Canady
Kristine Capell
Stephen Cardlin

Sonja Jean Carlin
Carol Cartwright
Patty Chan
Leda Chang
Rajashree Choudhury
Sara Connolly
Robert Cope
Joshua Cordes
Barbara Cozzens
Lynda Curland
MaryAnne Curry
Tonantzin Custodio
Joseph Del Hierro
Jeffrey Demma
Ivy Diep
Robbie Dixon
DriveWise Auto
Lauren Eber
Erin Einstein
Kathleen Ekins
Robin Engelman
Jeanette Estrem
Kelly Evenson
Robert Fielder
George Fischer
Calvin Fleming
Frances Fleury
Brandi Franzman
Mark Freedman
Renea Gallagher
Marinella Gallen
Ian Gampon
Cynthia Georgiadis
Richard Geringer
Evita Giron
Kal Grant
George Griffin
Kendra Grillet
Chad Grossman
Kristi Gudoski Cook
Zuky Guillen
Caryn J Gussin
Renee Haas
Heather Hafner
Susan Harmon
Jennie Hill
Birgitta Hoelting

Walter Hsiung
Karen Hudecek
Mextli Hyde
Kathy Jaso
Vanessa Joyce
Jeffrey Jurist
Chris Karitevlis
Leslie Katzman
Shun Kawabe
Zina Kole
Marcia Kooker
Kroger
Holly Krupnick
Pete LaCava
Bonnie Ladwig
Arthea J. Larson
Carol Leake
Joyce Lederer
Phyllis Lee
Andrew Leff
Gail Leino
Brittany Lester
Julie Leverage
Shermetta Levy
Lorraine Lewis
Eric Lindbom
Sabina Lokman
Mariaelena Lopez
Joel Antonio Lopez
Steven Lugo
Jennifer Lynch
Yvonne Mandleur
Lucinda Mansfield
Charles Marshall
Alicia Martinez
F. Mastrogiovanni
Natalia Maymi
Ruth McGinty
Ricki Melton
Elizabeth Mendoza
Laushana Merida
Lindsay Merrill
Metal Art Judaica
Sabel Montick
Van Moore
Courtney Morman
Erika Morris

**Advocates
\$500-\$999**

Todd Aaseth
Anonymous
Jose Arroyo
Bridgette Baca
Randy & Jannell Banchik
Charitable Family Fund
William Caffee
Siannah Collado Boutte
Jean-Luc Deschaine
Cheryl Dickey
Laura Geffen and John
Groper
David Higuera
Christi Hogin and Michael
Jenkins
Leslie Johnson
Art Kitajima
Barbara Laird
Joshua Levine
Maxfield Marquardt
George Morton Reed
Jeannine Nadel
Florinda Pendley Vasquez
Kim Peterson
Jaime Piscione
Savitsky Charitable Fund
Virginia and Norton Sharpe
Stephanie Silvers
Ann Smith
Nina Spaccarelli-Despain
The Taylor Family Trust
Yvette Verastegui
Susan Welde
Courtney Zifkin

**Supporters
\$100-\$499**

Rebecca Abano
J.P. Ackels
Karla Ahmanson
Mahin Alamdari
Amazon Smile
Anonymous
Andrew Apfelberg
Nancy Arntzen

Linda Baca
Michelle Bader
Jon Barrett
Margo Baxter
Emily Bellavy
Guadalupe Bermudez
Linda and Joseph Bette
Damian Bette
Justin Bette
June Bilgore
Lauren Birnstein
Susan Blasco
Richard Blasco
Rosanna Blumenberg
Maggie Bobbitt
Kevan Boner
Elena L. Bongiovanni
Mario Borge
Ryan Bouchard
Mr. Chris Brandmaier
Charles Brown
Shelby Cahill
Brandon Del Campo
Christy Cannon
Rebecca Carter
Daria Cercek
Marlies Chalabi
Charities Aid Foundation
of America
Vanessa Chow
Jared Chuan
Crisis Intervention
Department at Aviva
Susan M. Clery
Michael H Collins
Maria Cousineau
Michael Crepezzi
Patricia Daehnke
Amelia Damborg
Ms. Rosalie Davis-Green
Wendy Derzaph
Scott Dressler
Eric DuBrow
J Ebel
Carlos Echeverri
Maricela Echeverri
Donna Econn

Leonard Egert
Traci Einhorn
Mats Engdahl
Gennalynn Estrada
Nicole Ettinger
Parinaz Farzin
Janice Feinstein
Howard Feuerstein
Karen Filipi
Kelley Kiel Fitzgerald
Nancy Flaherty
David Flamer
Shereen Flamer
Joan Ford
Andrew Formby-Carter
Joseph Franco
Dale Freyberger
Tundi Goldstein
Lloyd M. Goodman
Brian Graden
Margaret Graham
Liatt Granott
Arthur Greenberg
Sheila and Hal Greenwald
Adam M. Greenwald
Victoria Hannah
Barbara Hardesty
Kelsey Hendrix
AnnaDee Henson
Doug Herrera
Aimee Hoffman
Nancy Holme-Elledge
Kathie Hoops
Patricia Horikawa
Adrienne and Elliot Horwitch
Jerry Hsieh
Aronda Hurst
Steven I Katz
Tim Ingram
Sarah Ingram
Brian Irvin
Michael Irvin
Jack Irvin
Bekka Jackson
Jeff Jamerson, Ph.D.
Talia James-Armand
Susan Jannol

Ben Jehoshua
Gregory John
Just Give
- Great Nonprofits
Steven and Julie Karic
Vida Khavar
Ben Kiker
Scott Knowles
Angela Koerber
Jason Komorsky
Khrystal Landrum
Tamara Laster
Sheila Lavin
Robert Lebano
Lorene Lebimoyo
Penelope Leon
Sandy Lieberman
Cynthia Loftis
Sabina Lokman
Louisa Lombard
Mary Lopez
Mrs. Carina Luwisch
Elizabeth MacDonald
Shoreen Maghame
Fred Manaster
Mary Jo Manning
Jennifer Marfil
Marjorie Mautner
Tim McEwan
Myra Mendizabal
Kevin Mendoza Camacho
Carol Mitchell
Jaclyn Morris
Naz Naghshbandi
Mark Nazal
Jacquie Nemor
Mary Newcombe
Jasmin Niku
Malena Patel
Evelyn D Polizzi
Brenda Prudencio
Gena Pruetz
Jennifer Ramirez-Shea
Jason Reed
Sina Refua
Gail Reilly

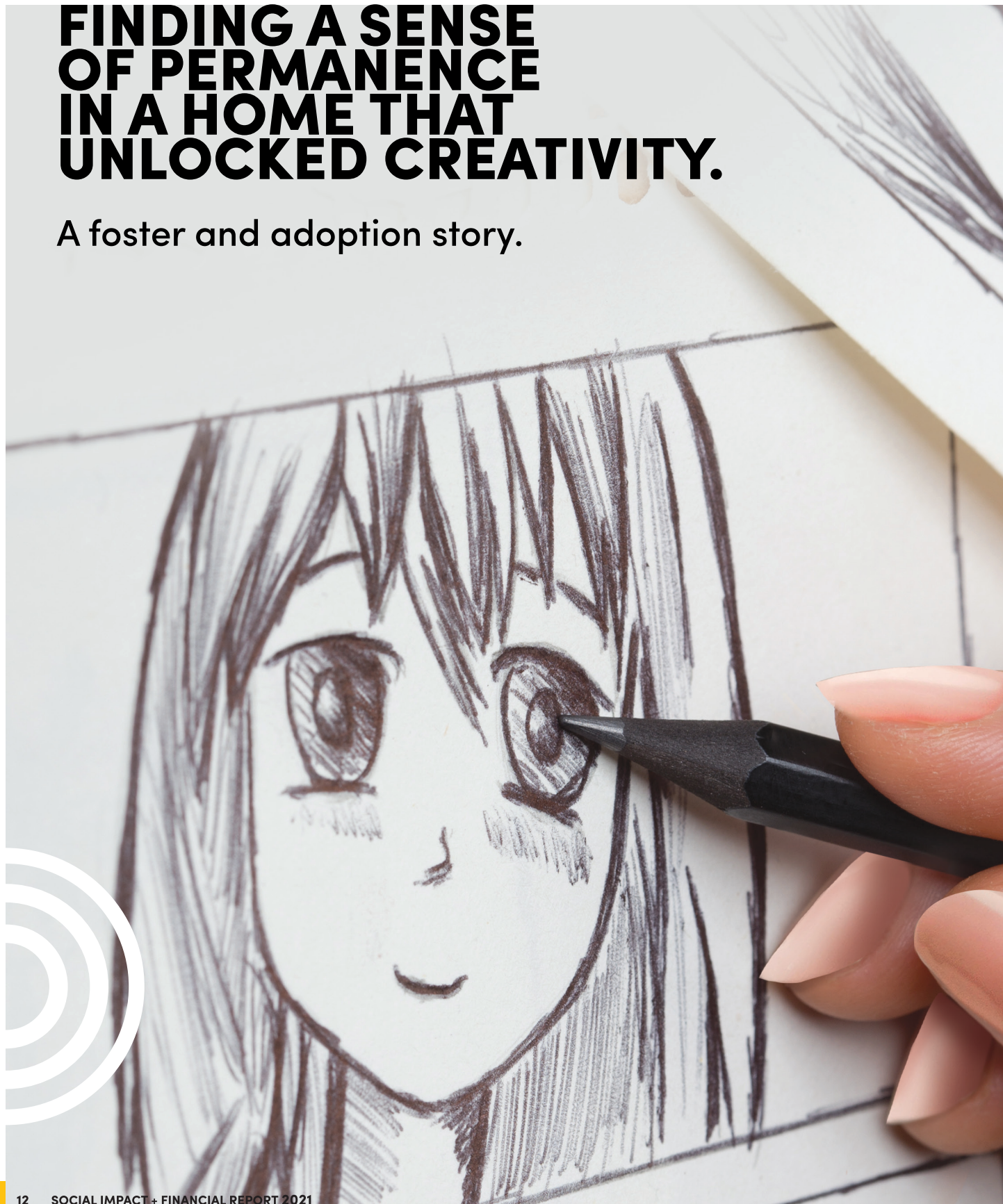


STORIES OF RESILIENCE

**HOW OUR CLIENTS EXPERIENCE OUR PROGRAMS
AND CREATE BRIGHTER FUTURES**

FINDING A SENSE OF PERMANENCE IN A HOME THAT UNLOCKED CREATIVITY.

A foster and adoption story.



SERVICES MADE POSSIBLE BY YOU.

Some of Aviva's most mission-critical programs are made possible by the generosity of private donors and in-kind gifts from corporations and foundations. With heartfelt gratitude, we recognize this year's donors and partners.

Leader's Circle \$25K+

Ahmanson Foundation
Kaiser Permanente
Los Angeles Medical Center
U.S. Department of Health & Human Services
United Way Emergency Food & Shelter Program

Benefactors \$10K-\$24,999

Adams-Mastrovich Family Foundation
Anonymous
Mark Caffee
Friars Charitable Foundation
George Hoag Family Foundation
Genevieve Haines and Fred Buescher
Harold Edelstein Foundation
Lester and Rhea Kleinberg Fund
Danette Meyers
Susan Rothenberg
Greer and Myles Saunders
Jonathan M. Werner

Patrons \$5k-\$9,999

Jan and Bruce Andelson
Anonymous
Audrey & Sydney Irmas Charitable Foundation
Regina Bette
BLT Enterprises

Disney Employee Matching Gifts
Emma Carey Groh Trust
Greenberg Glusker LLP
Fiona and Phil Heyes
Leslie and Jack Kavanaugh
Lon V. Smith Foundation
Los Angeles Trial Lawyers' Charities
Henry and Winifred Lyons Foundation
Markall, Inc.
Angela Miller

Partners \$1K- \$4,999

Computer Physicians, Inc.
Kate and Chris Corsmeier
D. Michael Rust Endowment of the Sacramento Region Community Foundation
Dooner/lungerich Family Charitable Fund
Edward W. Saltzberg Revocable Trust
Cindy and Edwin Fields
First Citizens Bank
Susan Friedman
Grace Helen Spearman Foundation
Sharon Griffin
Karen Gruber
Morris A. Hazan Family Foundation
Hollywood Chamber of Commerce Community Foundation
Sari and Justin Kern
Richie Konigsberg
Dorene Laster
Lola Levoy

Dottie Long
Los Angeles Breakfast Club Foundation
Tamara and Richard Lowensohn
Andrea and Steve Lurie
Vicki Magasinn
Barbara and Joel Marcus
Linda May and Jack Suzar
Cleo Murnane
Arvind Murthy
Mutual of America Life Insurance Company
National Council for Behavioral Health
Nirmala Rams Family Fund
Juliet Oman
Paycom
Dana Reston-Lyons and Robert Lyons
Veronica Santa Maria
Schorr Admin Trust TA
Seyfarth
Sara Shapouri
Robert Singer
Candace Foy Smith
Morgan Stanley
Laurie Strassman
Linda May and Jack Suzar
Nicole Swain
Robin Swartz
The Charitable Foundation
Linda Tyrer
Rose Villasenor and Adilia Aguilar
Janis Black Warner
Whole Foods Market Community Giving
Wilshire Rotary Club of Los Angeles

WHO WE ARE

A TEAM OF LEADERS AND SUPPORTERS

OFFICERS

Board Chair

Jonathan M. Werner,
Alvarado Smith

President/CEO

Regina Bette
Aviva Family
& Children's Services

Vice Chair

Danette Meyers
Deputy District Attorney
City of Los Angeles

Treasurer

Nicole Swain
Bank of Southern
California

Secretary

Candace Foy Smith
Deputy District Attorney
City of Los Angeles

BOARD OF DIRECTORS

Bruce Andelson
Greenberg Glusker

Mark Caffee
Communications Consultant

Genevieve Haines
Haines and Co.
Public Relations

Leslie Kavanaugh
Rodeo Realty

Lola Levoy
Beverly Hills Escrow

Heidi Jo Markel
Eclectic Pictures

Susan Rothenberg
Design In Style

Yvette Verastegui
Los Angeles
Superior Court

COUNCIL OF GUARDIANS

Susan Casden
Hon. Gray Davis
Hon. Wendy Greuel

Nancy Josephson
Hon. Paul Koretz
Barbara Lazaroff
Lauren Leichtman
Arthur Levine
Linda May
Hon. Mitch O'Farrell
Richard Sherman
Sharon Stone
Carolyn Strauss
Hon. Steve Westly
Hon. Zev Yaroslavsky

ACCREDITATIONS AND AFFILIATIONS



The Executive Cabinet is a group of leaders at the highest level of management who steward Aviva's long-term viability and sustainability, and ensure that the strategic direction of the agency is aligned with the Aviva mission.

Jeffrey L. Jamerson,
Ph.D., Vice President,
Programs and Services

Angela Miller,
Chief Operating Officer

Regina Bette
L.M.F.T.
President/CEO

Usha Murthy,
M.B.A., C.P.A.,
Chief Financial Officer

Kim Peterson,
M.A., Vice President,
Change Management

Adam M. Greenwald,
M.B.A., Vice President,
Development

FOSTER & ADOPTION

Katie, a foster child full of creativity and artistic skills, was referred to Aviva with the hopes of matching her to a forever family. Her path to stability was not easy as she had been in multiple placements and struggled to connect with, and trust adults. Often unable to share her feelings, Katie was angry and like so many children in her situation, she felt abandoned and let down. However, at just the right moment, 12-year-old Katie was connected to resource parents Lisa and Kyle.

Over time, Lisa, Kyle and our Aviva team began to make real progress, guiding, supporting, and caring for Katie. A turning point came when Katie was able to identify art, and specifically anime, as a real passion. Unlocking her creative potential gave her a new coping skill and renewed hope. Soon she was able to express her feeling and advocate for herself. With creative expression

as a tool for conveying her feelings and ideas, and the support of her Aviva team, she began focusing on adoption. She was matched with a forever family and graduated from our intensive services foster care program. Although she no longer lived with Kyle and Lisa, the supportive relationships she formed with them shifted Katie's outlook and they are still a part of her life. Thriving in her adoptive home, Katie continues to visit her resource parents and to nurture her creativity.

2021 IMPACT DATA

73%
of foster youth placed
in permanent stable homes

6 children
adopted into
permanent families

1,391
children and
families served

The critical relationships with trusted adults that she formed along the way are still a part of her life.



Alexander is an athletic, engaged, 12-year-old boy who enjoys sports. While playing football with his friends he slipped and fell, severely breaking his arm and requiring surgery. Alexander had to spend a month in the hospital. This traumatic accident caused Alexander to have recurring, distressing memories that affected his behavior, his mental health, and his well-being.

When he returned home from the hospital, Alexander's memories of the accident began to trigger panic attacks and emotional outbursts. He started to avoid activities he once enjoyed. His relationships with family and friends and his schoolwork began to suffer.

Alexander's mother contacted Aviva for support. He began his cognitive behavioral therapy with a focus on trauma. He built a relationship with his therapist and was engaged in his treatment, eager to incorporate a variety of interventions introduced to him to treat the symptoms and behaviors he was experiencing. Most importantly, Alexander did not heal alone. He had the support of his mother who consistently attended family sessions on a weekly basis to help support his efforts.

Therapy provided Alexander with a multitude of healthy coping skills including being able to share and process his trauma story through the creation of a comic book. Later he shared his book with his mother during a family session which helped desensitize his experience of the traumatic event.

Both Alexander and his mother reflected on all that Alexander had achieved. He was able to return to school without experiencing panic attacks or avoiding the area on campus where the traumatic event occurred. Alexander's mother feels his progress exceeded her expectations and most importantly, she was grateful he was able to get back to being a healthy, happy kid.



2021 IMPACT DATA

60%
of clients saw a decrease in risky behaviors (PSC-35)

More than 50%
of clients achieved their treatment goals successfully

694
individual clients served

83% of staff
are trained in an evidence-based practice to better service our clients' needs

IN LOVING MEMORY

Walter Earl Morales | July 9, 1991 - September 5, 2021

With deep sadness, the Aviva team announced the tragic death of our colleague, Walter Earl Morales, on September 5, 2021. Walter joined Aviva in October 2019 as a resident advisor in our Wallis House program. Known for his generous and considerate manner with all, he was a calm and compassionate supporter of the women and youth residents at Wallis House and a dear friend to his fellow team members. During the pandemic, Walter was a steadfast presence with clients and colleagues alike.

Walter is survived by his wife Janeria; his son, Ace born in July 2021; his son, JR (Walter Jr.); his nephew Sean for whom he was legal guardian; his mother Anna (of Belize); as well as a circle of extended family and friends.

He was beloved by his fellow employees and his loss is deeply felt by all who had the pleasure of knowing him.

WALLIS HOUSE. THE JOURNEY HOME BEGINS HERE.

THE ROAD TO HOMELESSNESS
IS RARELY A STRAIGHT LINE.



Heather, with a young daughter and expecting a second child, faced a series of unexpected events that left her without stable housing or financial resources.

Unable to find steady employment, Heather depended on her boyfriend for support. When he was incarcerated, she was unable to find employment or a place to live that she could afford for herself and her unborn child. The pandemic only exacerbated Heather's situation; resources were scarce.

The road eventually led Heather and her daughter to the Wallis House, a safe and secure home where women and their children can experience stability, comfort, support and care. Most importantly it secured a space for Heather to begin the work of creating a brighter future. Since arriving at the Wallis House, Heather's life has changed in many positive ways.

"I have peace of mind. And a roof over our heads. We have three delicious meals a day. We feel supported here."

From parenting education to job skills training, to healthy meals and a safe place to sleep, Wallis House is giving women the support they need with compassion and dignity.

Now Heather can reflect on her future. "I'm going to stay in school. And I want to find work so I can provide for my daughter and my unborn baby."

Heather gave birth to her second daughter and they continue to do well. Focusing on her education, Heather hopes to find a job and permanent housing in the next couple of months.

“

I have peace of mind. And a roof over our heads. We have three delicious meals a day. We feel supported here.

”



Alexander did not walk alone. He had the support of his mother who consistently attended sessions on a weekly basis to help support his efforts.



**WITH TIME AND
WITH LOVE, THE EFFECTS
OF TRAUMA GIVE WAY
TO RESILIENCE.**

A mental health story.





WHEN PAST PAIN IS RESOLVED, AND COMPASSION IS EXPERIENCED, THE PATH TO HEALING CAN BEGIN.

A crisis intervention story.

At 18 years old, the troubles of a difficult family life can manifest in challenging ways. Instability, neglect and addiction in a child's home can set them on a course of emotional upheaval, sadness, depression, and even their own addictive behaviors. Around the age of 8 years old, Jasmine's mother began using drugs and the family's first Department of Child and Family Services case was opened. By the time she was 12, Jasmine reported feeling anxious and struggled with her relationships with her mother and older brother. A lack of motivation was just one facet of the inner turmoil she experienced. Like many children in her circumstances, she withdrew and stopped attending school regularly.

Jasmine was depressed and experiencing suicidal thoughts, irregular sleep, nightmares, and excessive anger. Her depression made her sad and reluctant

to attend school or bathe regularly. Obsessive and compulsive symptoms were persistent; she ruminated about things left undone and had a general overwhelming sense of anxiety and worry. Without a strong family connection or reliable adults in her life, she self-medicated — using marijuana to soothe her tumultuous emotions.

Aided by Aviva's team, focused and intensive treatment was provided to give Jasmine new tools to help manage her anger and depressive tendencies. They worked together to identify triggers that would enable Cognitive Behavioral Therapy and psychoeducation to give her new coping skills. Aviva's Parent Partner worked closely with Jasmine's mother to implement consistent parenting interventions and support for her daughter. Past unresolved trauma began to be processed and healing began to redefine her path forward. With the love and attentiveness of her care team, Jasmine began to learn strategies for

Past unresolved trauma began to be processed and healing began to redefine the path forward.

managing anxiety and how to cope with the waves of emotions she felt. From calming techniques to prosocial communication with others, Jasmine received the help she needed. Over time, the support and skill of her team helped Jasmine make significant progress. And this year she graduated from high school and is ready to begin the next chapter of her life.

2021 IMPACT DATA

82%

of our Crisis Intervention wraparound families felt their Aviva team gave them the tools and confidence to manage future problems and the community support to meet their needs

349

children and their families received services

49%

of clients

graduated and accomplished their treatment goals